

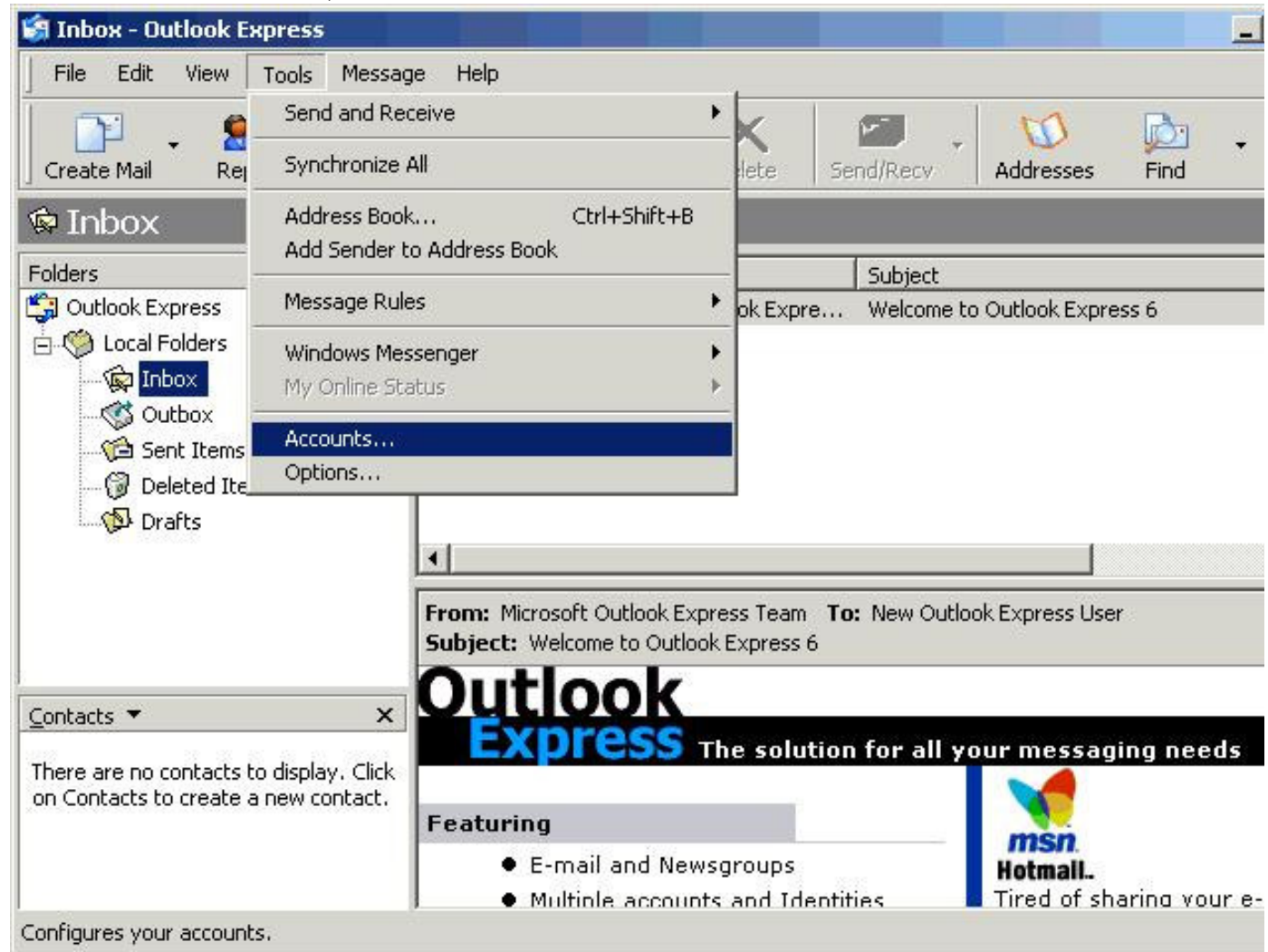
How to set up your e-mail account in Outlook Express 5.0-6.0

1. You will need your email account information to set up your email program. This information will be referenced throughout this walkthrough.
2. Start the **Outlook Express** program.

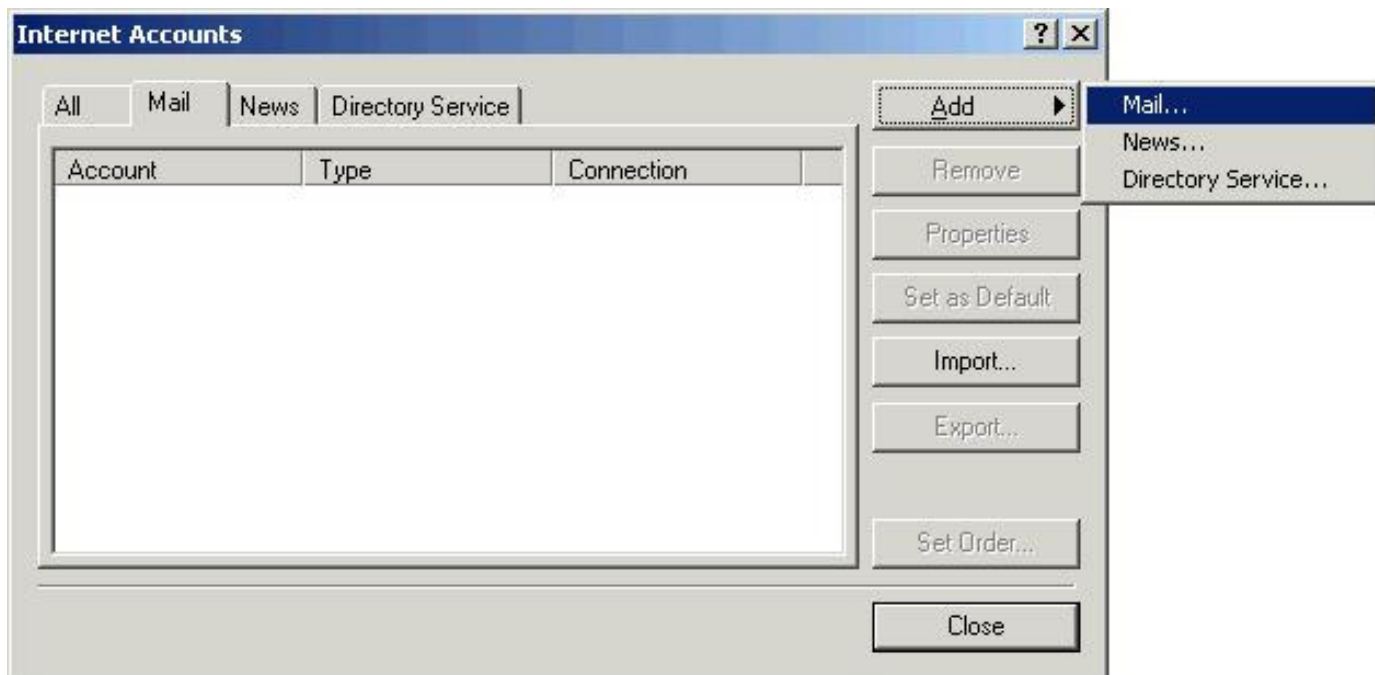


Outlook
Express

3. From the **Tools** menu, choose **Accounts**.



4. Click the **Add** button and choose **Mail**.



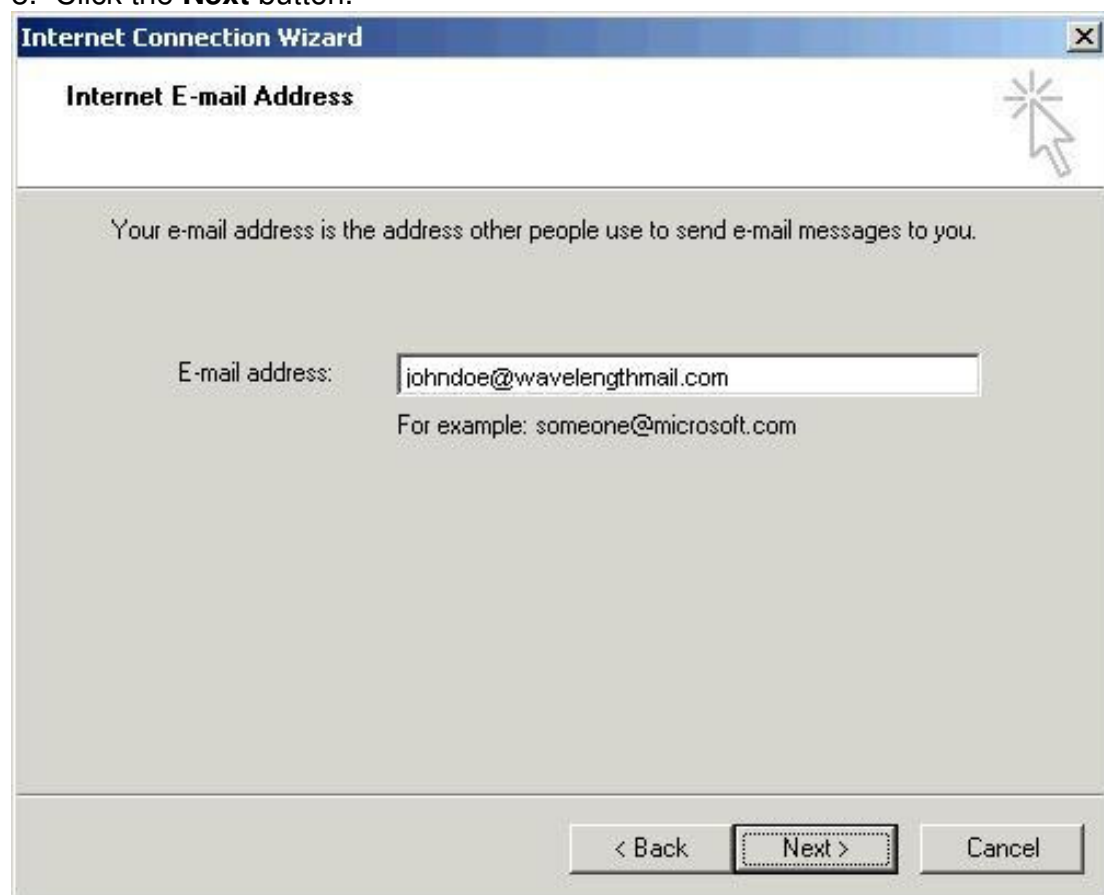
5. In the **Display name** field, type your full name.

6. Click the **Next** button.



7. In the **E-mail address** field, type your full Wavelength email address (e.g., [johndoe@wavelengthmail.com](mailto: johndoe@wavelengthmail.com)).

8. Click the **Next** button.



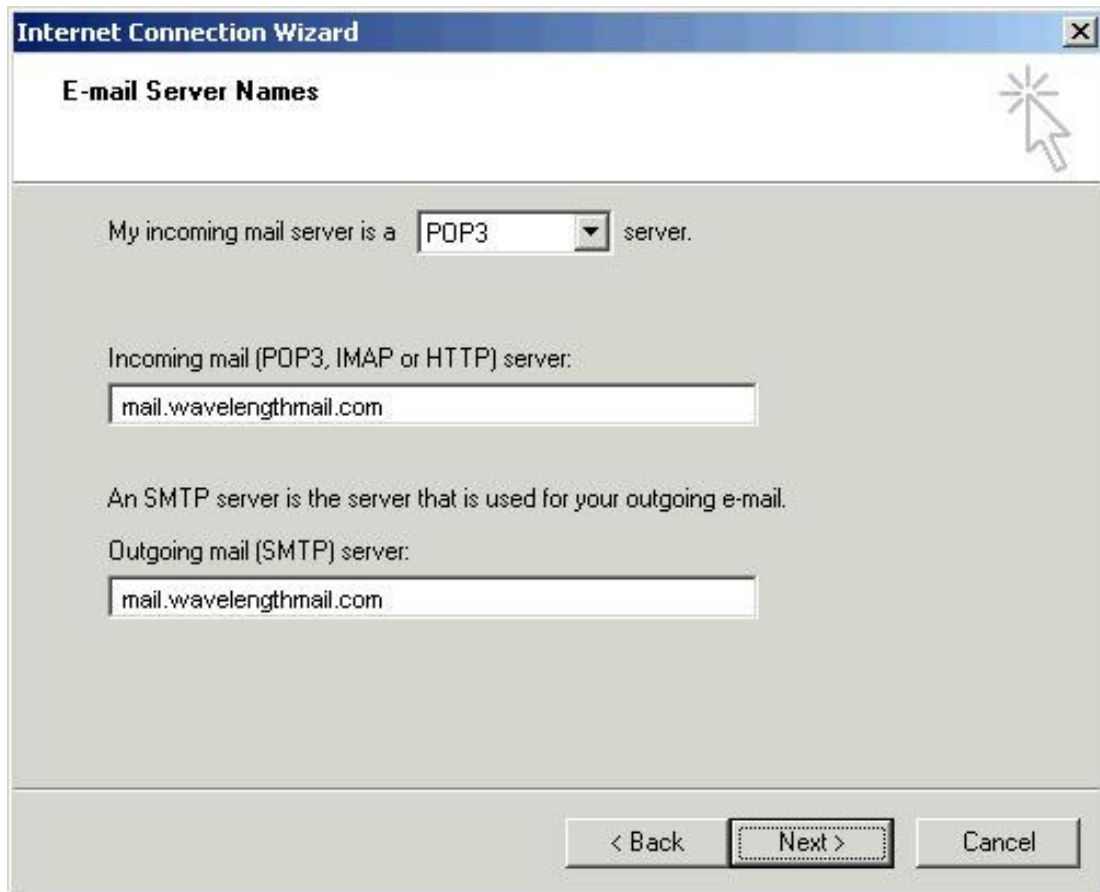
The screenshot shows a dialog box titled "Internet Connection Wizard" with a close button (X) in the top right corner. The main heading is "Internet E-mail Address". Below the heading is a mouse cursor icon. The text inside the dialog reads: "Your e-mail address is the address other people use to send e-mail messages to you." Below this text is a label "E-mail address:" followed by a text input field containing "johndoe@wavelengthmail.com". Underneath the input field is the text "For example: someone@microsoft.com". At the bottom of the dialog are three buttons: "< Back", "Next >" (which is highlighted with a dashed border), and "Cancel".

9. Make sure that the **My incoming mail is a _____ server** drop-down list is set to **POP3**.

10. In the **Incoming mail (POP3, IMAP or HTTP) server** field, type mail.wavelengthmail.com.

11. In the **Outgoing mail (SMTP) server** field, also type mail.wavelengthmail.com.

12. Click the **Next** button.



The screenshot shows the 'Internet Connection Wizard' dialog box, specifically the 'E-mail Server Names' step. The window title is 'Internet Connection Wizard' and the subtitle is 'E-mail Server Names'. The main content area contains the following text and fields:

- 'My incoming mail server is a **POP3** server.' (The 'POP3' is in a dropdown menu).
- 'Incoming mail (POP3, IMAP or HTTP) server:' followed by a text box containing 'mail.wavelengthmail.com'.
- 'An SMTP server is the server that is used for your outgoing e-mail.'
- 'Outgoing mail (SMTP) server:' followed by a text box containing 'mail.wavelengthmail.com'.

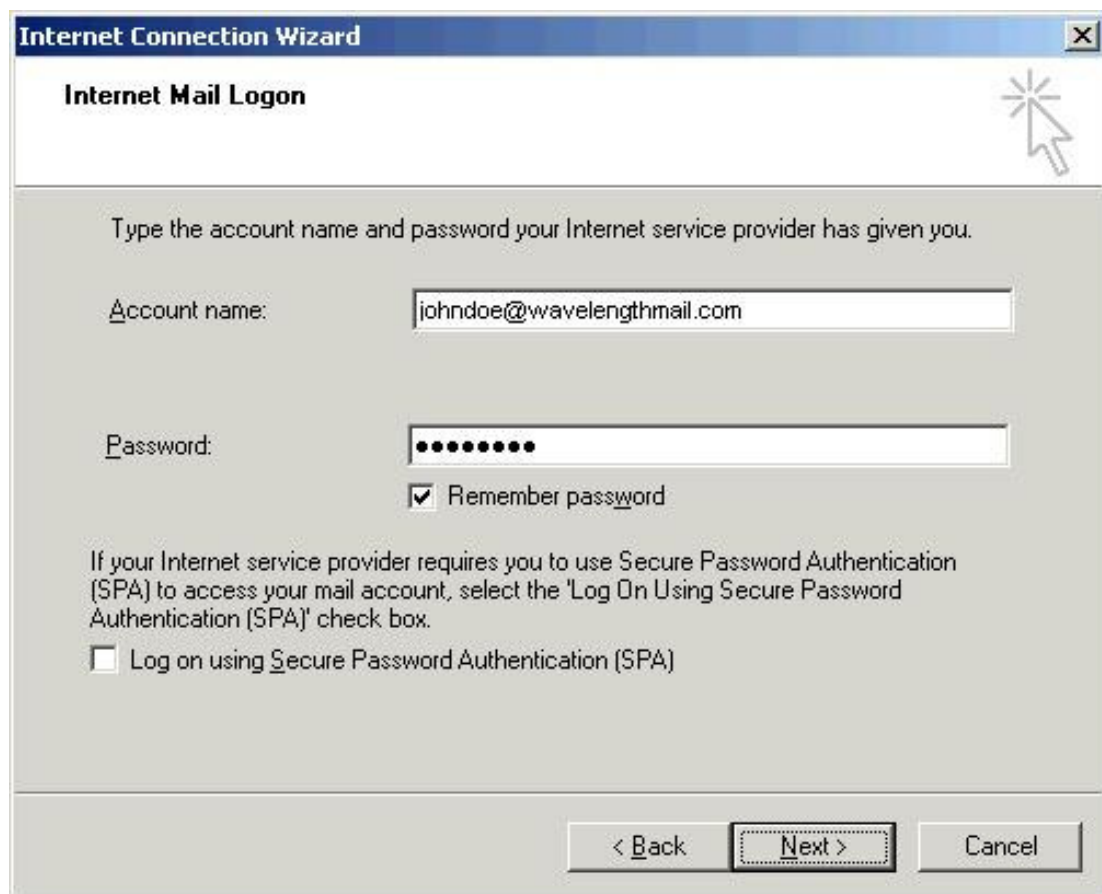
At the bottom of the dialog box, there are three buttons: '< Back', 'Next >' (which is highlighted with a dashed border), and 'Cancel'.

13. In the **Account name** field, type your full Wavelength email address (e.g., [johndoe@wavelengthmail.com](mailto: johndoe@wavelengthmail.com)).

14. In the **Password** field, type your email password.

15. Check the box next to **Remember password** if you wish to save your password.

16. Click the **Next** button.



Internet Connection Wizard

Internet Mail Logon

Type the account name and password your Internet service provider has given you.

Account name: johndoe@wavelengthmail.com

Password: ●●●●●●●●

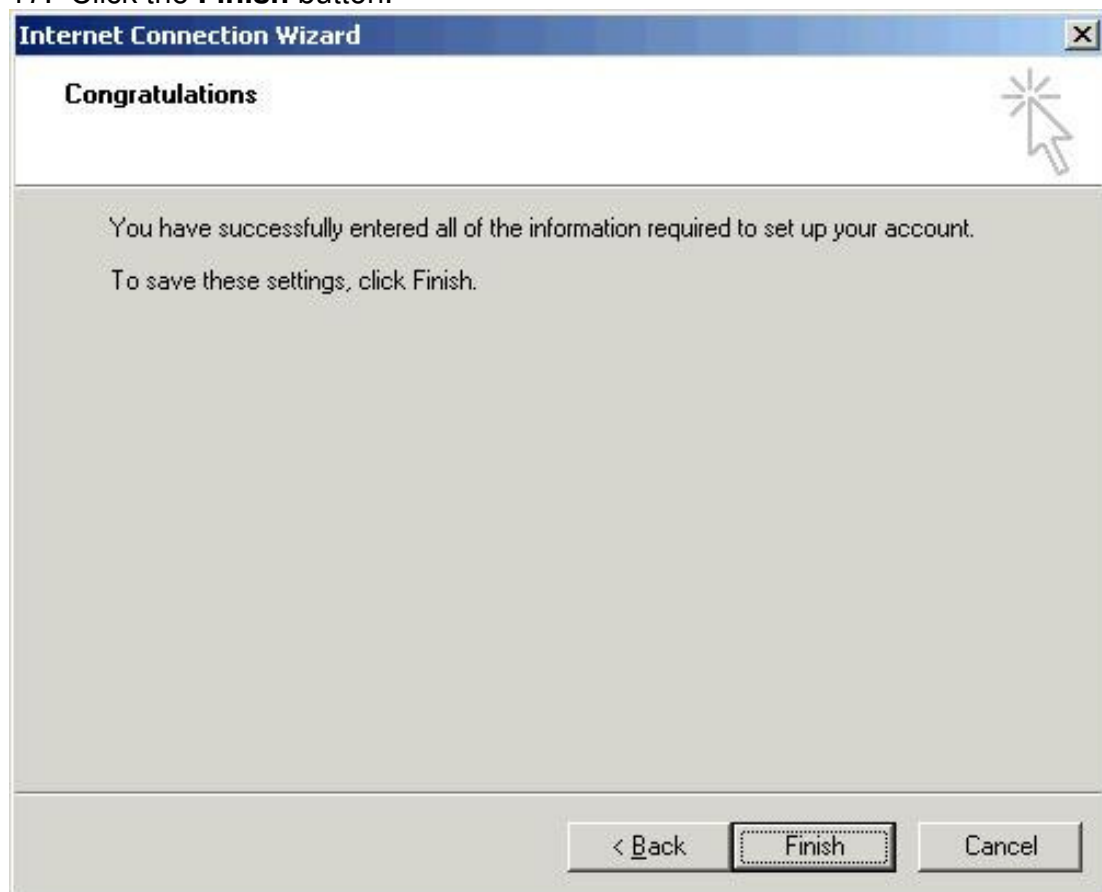
Remember password

If your Internet service provider requires you to use Secure Password Authentication (SPA) to access your mail account, select the 'Log On Using Secure Password Authentication (SPA)' check box.

Log on using Secure Password Authentication (SPA)

< Back Next > Cancel

17. Click the **Finish** button.



Internet Connection Wizard

Congratulations

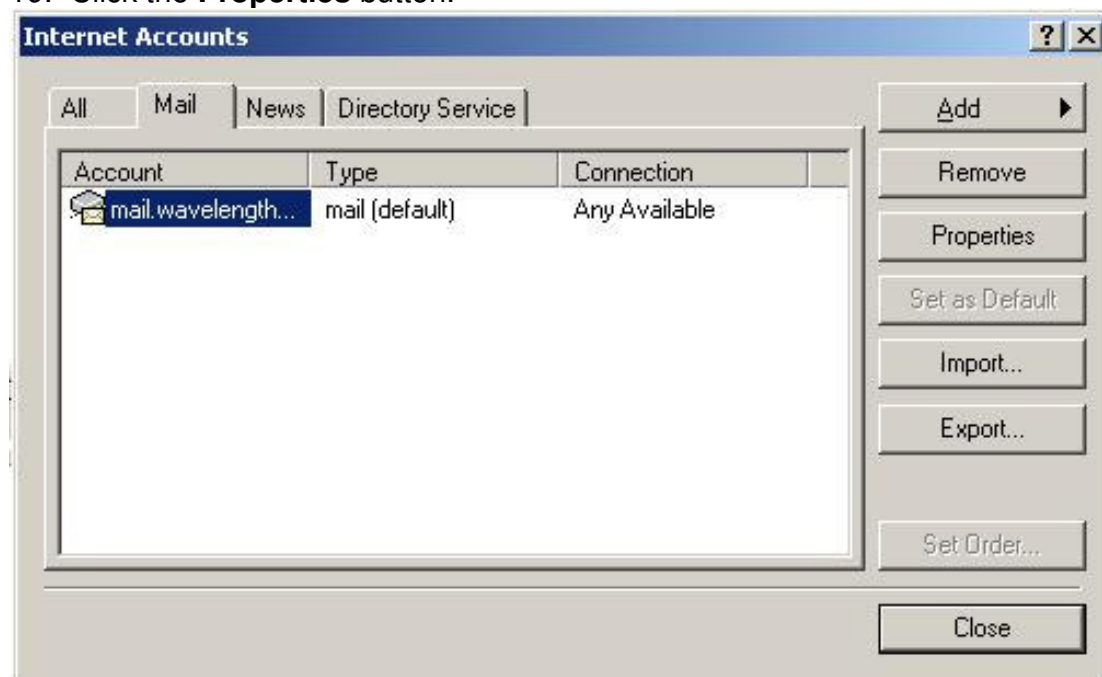
You have successfully entered all of the information required to set up your account.

To save these settings, click Finish.

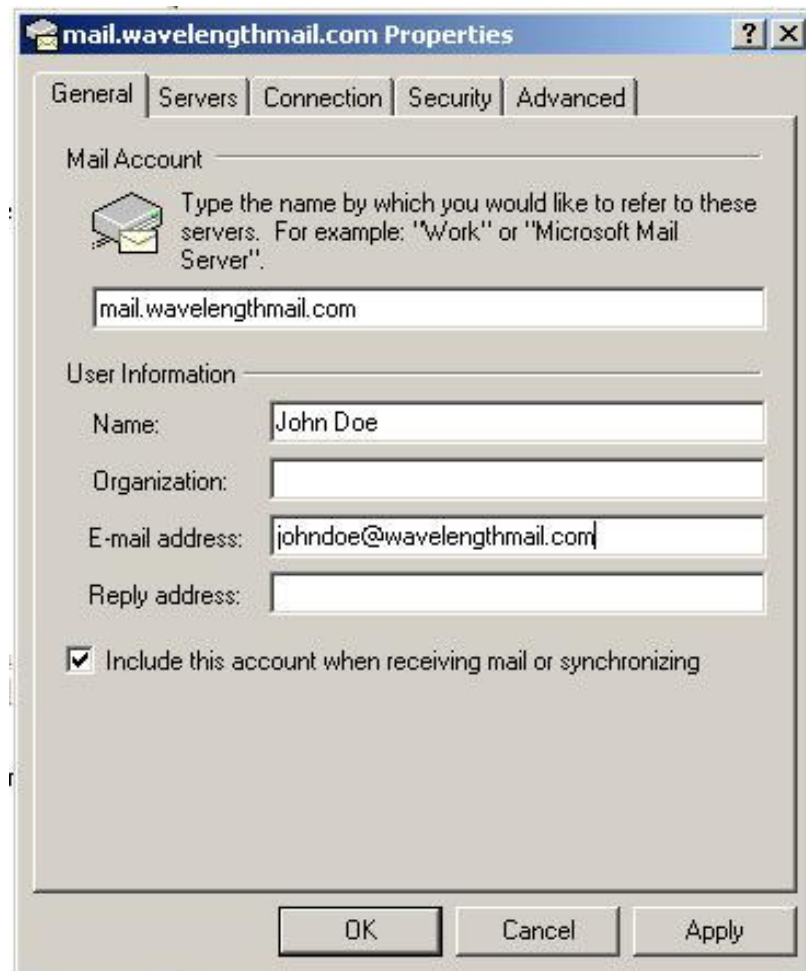
< Back Finish Cancel

18. Select your email account in the **Account** list.

19. Click the **Properties** button.



20. Click the **Servers** tab.

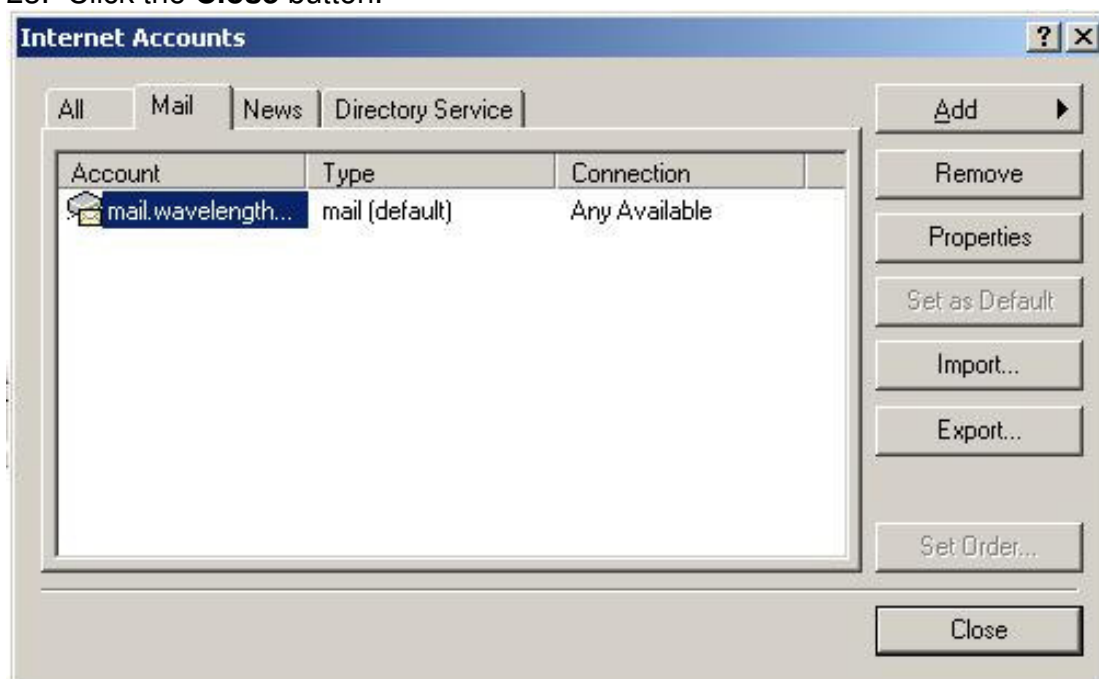


21. Check the box next to **My server requires authentication**.



22. Click the **OK** button.

23. Click the **Close** button.



24. Your email account is now configured!